

# **BLUEPRINTS FOR SOLO PIANO**

**Book 1: Winter**

**by Garrett Fisher**



## Book 1: Winter | List of Modes

Garrett Fisher

### Winter Solstice - Night



Late Summer - Morning



## Mid Fall - Noon



### Winter Solstice - Dusk



### Fall Equinox - Noon



Late Winter - Dawn



## Mid Spring - Dawn



Late Spring - Noon



## Mid Winter - Dawn



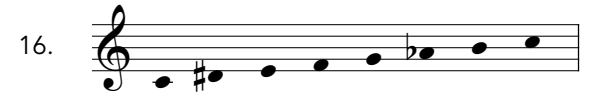
### Mid Winter - Morning



Mid Fall - Dusk



## Mid Summer - Dawn



## Mid Fall - Dawn



### Late Winter - Afternoon



### Summer Solstice - Dawn



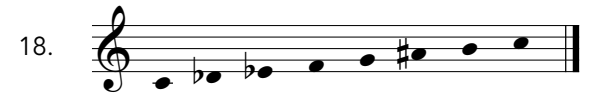
Late Fall - Afternoon



## Spring Equinox - Night



Late Fall - Noon



# Blueprint 1

## Winter Solstice - Night

Mode: Winter Solstice - Night



[10 sec]

**A** Moon Thread [Sample Motifs]

The notation for section A shows a piano accompaniment with a treble and bass staff. The treble staff has a single line of notes (C4, D4, E4, F4, G4, A4, B4, C5, D5, E5, F5, G5, A5, B5, C6) and the bass staff has a single line of notes (C3, D3, E3, F3, G3, A3, B3, C4, D4, E4, F4, G4, A4, B4, C5). The sample motifs are shown as a sequence of notes on a single staff: C4, D4, E4, F4, G4, A4, B4, C5, D5, E5, F5, G5, A5, B5, C6.

A single line using white keys

**B** [15 sec] [Sample Motifs]

The notation for section B shows a piano accompaniment with a treble and bass staff. The treble staff has a single line of notes (C4, D4, E4, F4, G4, A4, B4, C5, D5, E5, F5, G5, A5, B5, C6) and the bass staff has a single line of notes (C3, D3, E3, F3, G3, A3, B3, C4, D4, E4, F4, G4, A4, B4, C5). The sample motifs are shown as a sequence of notes on a single staff: C4, D4, E4, F4, G4, A4, B4, C5, D5, E5, F5, G5, A5, B5, C6.

RH: Moon Thread

LH: Cluster Chord Counterpoint:  
interjects 3-4 note cluster chords, including black keys

Blueprint 1  
Winter Solstice - Night

[8 sec]

**C** Cascade [Sample Motifs] **D**

RH: white keys  
LH: Cluster Counterpoint

BH: quarternote  
downbeat

[8 sec]

**E** Cascade

[15 sec]

**F** Moon Thread

RH: white keys  
LH: Cluster Counterpoint

[8 sec]

**G** Cascade **H** [8 sec]

Blueprint 1  
Winter Solstice - Night

[30 sec]

**I** RH: Floating Melody

24

LH: Sample Motif

BH: A tentative ending

LH: Alternate between chords with all white keys and those that include black keys.

[15 sec]

**J** Moon Thread with Octaves

27

RH: add octaves, ascending  
LH: add octaves, descending

**K** Larger Cascade

28

LH: starts with an F1 / F2 octave.  
BH: start in a high register, and descend.

29

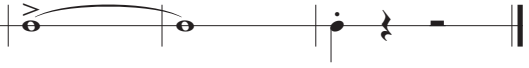
Blueprint 1  
Winter Solstice - Night

M



BH: cluster chords, using  
both white and black keys.

N



White keys only.

BH: cluster white-key chord

# Blueprint 2

## Winter Solstice - Dusk

Mode: Winter Solstice - Dusk



**A** [10 sec]  
Rolling chord

**B** [45 sec]  
Climbing, Unfolding

Motif A

[Any range]

Motif B

Chords climb and unfold through shifting colors and light.  
LH and RH are in dialogue.

With each new phrase, the bass note rises to a  
higher note.

Motifs A and B are interwoven between hands.

**C** [5 sec]  
Anchor

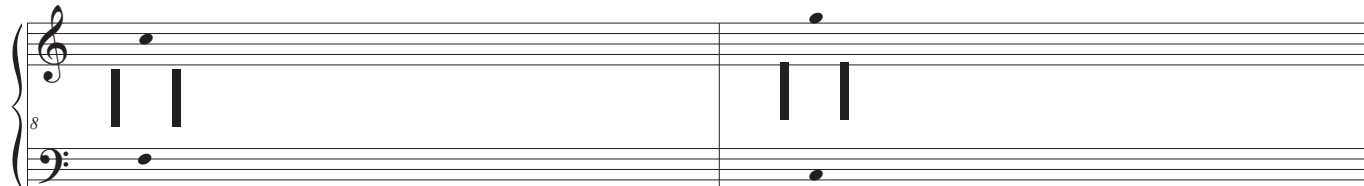
**D** [15 sec]  
Climbing, Unfolding



Blueprint 2  
Winter Solstice - Dusk

[15 sec] [10 sec]

**E** Floating **F**



**Accompaniment**

RH plays with both single notes  
and simple chords.

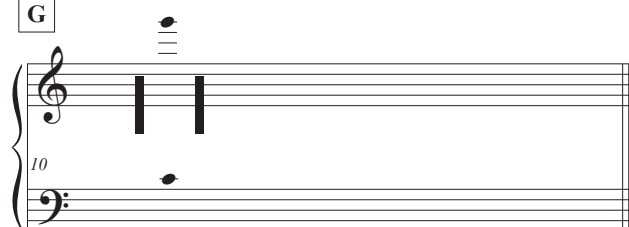
**Melody**

LH plays single notes above and below  
RH, referencing Motif B.

**Accompaniment: LH**

**Melody: RH**

**G**



3 Chords implying unanswered questions

# Blueprint 3

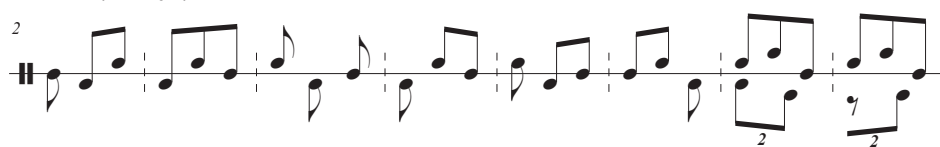
## Mid Spring - Dawn

Mode: Mid Spring - Dawn



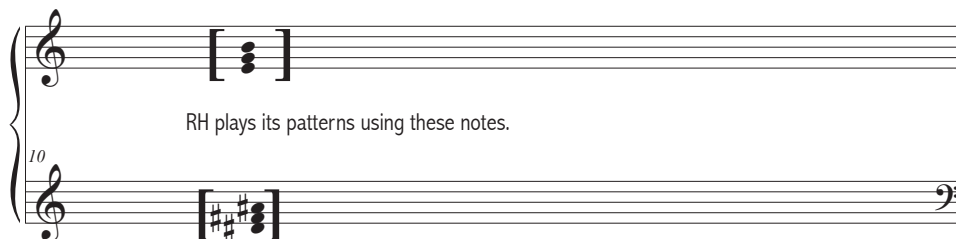
Reh A [and C] Sample patterns.

Stems pointing down are LH,  
stems pointing up are RH



[10 sec]

A (Un?)Spooling



RH plays its patterns using these notes.

LH interjects using these notes.

# Blueprint 3 Mid Spring - Dawn

[50 sec]

**B**

RH

LH

Sample B Major Chords played by LH:

The LH begins to pull outward from the RH's center of gravity until it reaches this range.

RH introduces new notes.

Treat the A# as a special note that stands apart from the others.

As the LH descends, it plays B major chords (2-3 notes), in any inversion.

**C**

LH: Final Anchor

**D** **Sky Reflection**

Phrase 1

Phrase 2 [5 sec]

Phrase 3 [10 sec]

A

B

A dialogue of chords between LH and RH.

The chords are based on [A] and [B], and comprised of 2-3 notes (in each hand).

Each hand can play different chords and can overlap.

Brief single note melodies can be intertwined.

This phrase is an expansion of Phrase 2's thoughts, rising upward until the RH Hand reaches B6.

This phrase spills into:

Blueprint 3  
Mid Spring - Dawn

[50 sec]

**E**

(Un?)Spooling

**F**

Bridging Echoes

19

BH: Starting register

LH: echoes of one another  
intertwined in (Un?)Spooling

**G**

21

[Sample ending]

## Blueprint 4

### Mid Winter - Morning

**Mode: Mid Winter - Morning**



## Crunchy Rising Octaves

**A** [6 sec]      **B** [6 sec]      **C** [6 sec]      **D** [6 sec]

8vb [both notes]

RH: 8th Notes rising in Octaves  
LH: Interjects with Octaves

## Crunchy March

**E** [~4 Measures]

March Chords

RH: Sample Chordal Options

4/4

Blueprint 4  
Mid Winter - Morning

**F** Languid Repose

Sample Motifs

Gravity Center

**G** Half-baked  
[6 sec]

BH: arpeggio that runs into  
incompletion

**H** Crunchy Rising Octaves  
[6 sec]

**I** [6 sec]

**J** [6 sec]

8<sup>va</sup>

Blueprint 4  
Mid Winter - Morning

Unknown Ringing  
[7 sec]

**K**

20

LH: Crunch March Chords

Musical score for 'L' (7 sec). The score is written for piano (p) and features a treble and bass clef. The key signature is one sharp (F#). The melody consists of a series of eighth notes: F#4, G#4, A4, B4, C5, D5, E5, F#5, G#5, A5, B5, C6, D6, E6, F#6, G#6, A6, B6, C7, D7, E7, F#7, G#7, A7, B7, C8, D8, E8, F#8, G#8, A8, B8, C9, D9, E9, F#9, G#9, A9, B9, C10, D10, E10, F#10, G#10, A10, B10, C11, D11, E11, F#11, G#11, A11, B11, C12, D12, E12, F#12, G#12, A12, B12, C13, D13, E13, F#13, G#13, A13, B13, C14, D14, E14, F#14, G#14, A14, B14, C15, D15, E15, F#15, G#15, A15, B15, C16, D16, E16, F#16, G#16, A16, B16, C17, D17, E17, F#17, G#17, A17, B17, C18, D18, E18, F#18, G#18, A18, B18, C19, D19, E19, F#19, G#19, A19, B19, C20, D20, E20, F#20, G#20, A20, B20, C21, D21, E21, F#21, G#21, A21, B21, C22, D22, E22, F#22, G#22, A22, B22, C23, D23, E23, F#23, G#23, A23, B23, C24, D24, E24, F#24, G#24, A24, B24, C25, D25, E25, F#25, G#25, A25, B25, C26, D26, E26, F#26, G#26, A26, B26, C27, D27, E27, F#27, G#27, A27, B27, C28, D28, E28, F#28, G#28, A28, B28, C29, D29, E29, F#29, G#29, A29, B29, C30, D30, E30, F#30, G#30, A30, B30, C31, D31, E31, F#31, G#31, A31, B31, C32, D32, E32, F#32, G#32, A32, B32, C33, D33, E33, F#33, G#33, A33, B33, C34, D34, E34, F#34, G#34, A34, B34, C35, D35, E35, F#35, G#35, A35, B35, C36, D36, E36, F#36, G#36, A36, B36, C37, D37, E37, F#37, G#37, A37, B37, C38, D38, E38, F#38, G#38, A38, B38, C39, D39, E39, F#39, G#39, A39, B39, C40, D40, E40, F#40, G#40, A40, B40, C41, D41, E41, F#41, G#41, A41, B41, C42, D42, E42, F#42, G#42, A42, B42, C43, D43, E43, F#43, G#43, A43, B43, C44, D44, E44, F#44, G#44, A44, B44, C45, D45, E45, F#45, G#45, A45, B45, C46, D46, E46, F#46, G#46, A46, B46, C47, D47, E47, F#47, G#47, A47, B47, C48, D48, E48, F#48, G#48, A48, B48, C49, D49, E49, F#49, G#49, A49, B49, C50, D50, E50, F#50, G#50, A50, B50, C51, D51, E51, F#51, G#51, A51, B51, C52, D52, E52, F#52, G#52, A52, B52, C53, D53, E53, F#53, G#53, A53, B53, C54, D54, E54, F#54, G#54, A54, B54, C55, D55, E55, F#55, G#55, A55, B55, C56, D56, E56, F#56, G#56, A56, B56, C57, D57, E57, F#57, G#57, A57, B57, C58, D58, E58, F#58, G#58, A58, B58, C59, D59, E59, F#59, G#59, A59, B59, C60, D60, E60, F#60, G#60, A60, B60, C61, D61, E61, F#61, G#61, A61, B61, C62, D62, E62, F#62, G#62, A62, B62, C63, D63, E63, F#63, G#63, A63, B63, C64, D64, E64, F#64, G#64, A64, B64, C65, D65, E65, F#65, G#65, A65, B65, C66, D66, E66, F#66, G#66, A66, B66, C67, D67, E67, F#67, G#67, A67, B67, C68, D68, E68, F#68, G#68, A68, B68, C69, D69, E69, F#69, G#69, A69, B69, C70, D70, E70, F#70, G#70, A70, B70, C71, D71, E71, F#71, G#71, A71, B71, C72, D72, E72, F#72, G#72, A72, B72, C73, D73, E73, F#73, G#73, A73, B73, C74, D74, E74, F#74, G#74, A74, B74, C75, D75, E75, F#75, G#75, A75, B75, C76, D76, E76, F#76, G#76, A76, B76, C77, D77, E77, F#77, G#77, A77, B77, C78, D78, E78, F#78, G#78, A78, B78, C79, D79, E79, F#79, G#79, A79, B79, C80, D80, E80, F#80, G#80, A80, B80, C81, D81, E81, F#81, G#81, A81, B81, C82, D82, E82, F#82, G#82, A82, B82, C83, D83, E83, F#83, G#83, A83, B83, C84, D84, E84, F#84, G#84, A84, B84, C85, D85, E85, F#85, G#85, A85, B85, C86, D86, E86, F#86, G#86, A86, B86, C87, D87, E87, F#87, G#87, A87, B87, C88, D88, E88, F#88, G#88, A88, B88, C89, D89, E89, F#89, G#89, A89, B89, C90, D90, E90, F#90, G#90, A90, B90, C91, D91, E91, F#91, G#91, A91, B91, C92, D92, E92, F#92, G#92, A92, B92, C93, D93, E93, F#93, G#93, A93, B93, C94, D94, E94, F#94, G#94, A94, B94, C95, D95, E95, F#95, G#95, A95, B95, C96, D96, E96, F#96, G#96, A96, B96, C97, D97, E97, F#97, G#97, A97, B97, C98, D98, E98, F#98, G#98, A98, B98, C99, D99, E99, F#99, G#99, A99, B99, C100, D100, E100, F#100, G#100, A100, B100, C101, D101, E101, F#101, G#101, A101, B101, C102, D102, E102, F#102, G#102, A102, B102, C103, D103, E103, F#103, G#103, A103, B103, C104, D104, E104, F#104, G#104, A104, B104, C105, D105, E105, F#105, G#105, A105, B105, C106, D106, E106, F#106, G#106, A106, B106, C107, D107, E107, F#107, G#107, A107, B107, C108, D108, E108, F#108, G#108, A108, B108, C109, D109, E109, F#109, G#109, A109, B109, C110, D110, E110, F#110, G#110, A110, B110, C111, D111, E111, F#111, G#111, A111, B111, C112, D112, E112, F#112, G#112, A112, B112, C113, D113, E113, F#113, G#113, A113, B113, C114, D114, E114, F#114, G#114, A114, B114, C115, D115, E115, F#115, G#115, A115, B115, C116, D116, E116, F#116, G#116, A116, B116, C117, D117, E117, F#117, G#117, A117, B117, C118, D118, E118, F#118, G#118, A118, B118, C119, D119, E119, F#119, G#119, A119, B119, C120, D120, E120, F#120, G#120, A120, B120, C121, D121, E121, F#121, G#121, A121, B121, C122, D122, E122, F#122, G#122, A122, B122, C123, D123, E123, F#123, G#123, A123, B123, C124, D124, E124, F#124, G#124, A124, B124, C125, D125, E125, F#125, G#125, A125, B125, C126, D126, E126, F#126, G#126, A126, B126, C127, D127, E127, F#127, G#127, A127, B127, C128, D128, E128, F#128, G#128, A128, B128, C129, D129, E129, F#129, G#129, A129, B129, C130, D130, E130, F#130, G#130, A130, B130, C131, D131, E131, F#131, G#131, A131, B131, C132, D132, E132,

**M** **Sailor Song Ending**  
[Sample Melody]

23 Coming out of previous section

# Blueprint 5

## Mid Fall - Dawn

Mode: Mid Fall - Dawn



[15 sec]                      [15 sec]

**A**   Upward Strum                      Curling Smoke                      Upward Strum                      Curling Smoke

RH: single melodic line

[30 sec]                      [10 sec]

**B**   Whirling Leaves                      **C**   Whirling Leaves:  
C Anchor

LH weaves 2-4 notes followed by the  
RH with an arpeggiated response.

RH continues its pattern

[20 sec]

**D**   Rising Flight  
Phrase 1                      **E**   Rising Geese  
Phrase 2                      **F**   Rising Geese  
Phrase 3

BH: Rising triplets, generally in 3

RH: Longer arpeggios



Blueprint 5  
Mid Fall - Dawn

[20 sec] **G** Sky Chords 8va [30 sec] **H** Aggregate Migration

11

#

[20 sec] **I** Rising Flight [10 sec] **J** Sky Chords

13

[30 sec] **K** Upward Strum (Repeated) Curling Smoke **L** Curling Smoke Final Anchor

15

Repeated iterations of Upward Strum.

LH plays chord.  
RH plays Curling Smoke

**M** Ending Chord

# Blueprint 6

## Late Fall - Afternoon

Mode: Late Fall - Afternoon



**A** [10 sec] Upward Strum

**B** Lingerin Thought

**C** [25 sec] Lingerin Thought In Time

Sample Motif

RH: solo melody

RH: In time, or syncopated, with LH chords.

LH: Cluster chords. Can have a sense of breathing.

**D** [15 sec] [Episodic]

**E** [15 sec]

**F** [20 sec] Lingerin Thought Thicker

RH: Melody is in octaves

LH: Cluster chords can be thicker but not muddy

Blueprint 6  
Late Fall - Afternoon

modulates into...

present burst

[20 sec]  
**Lingering Thought Thicker**  
**G** [Episodic]

[20 sec]  
**Lingering Thought RH Thicker**  
**H**

[20 sec]  
**Lingering Thought Remnant**  
**I**

RH: Melody is in octaves

LH: Cluster chords can be thicker  
but not muddy

RH: remains thicker

LH resumes similar chords to Reh C.

RH can play 2 note chords as part of the  
melody.

[25 sec]  
**Upward Strum**  
**J**

**Lingering Melody in Octaves**  
**K**

**L**

BH: Reduce to a melody.  
Make 1 octave  
(not doubled octaves in BH)

## Blueprint 7

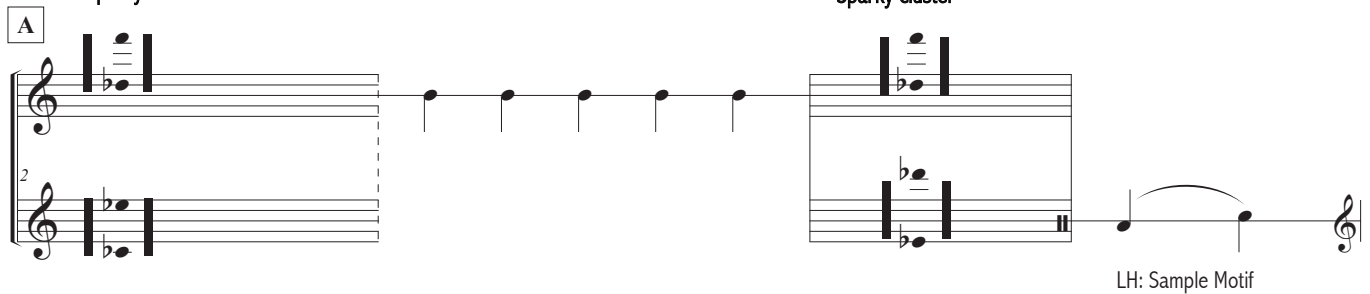
### Late Summer - Morning

**Mode: Late Summer - Morning**



## Sparky Intro

### Sparky Cluster



The downbeat is a cluster chord played by BH with D Flat as the tonic.

The remaining 4 chords are 2-3 note chords played by the RH only

LH interjects cluster chords around RH.

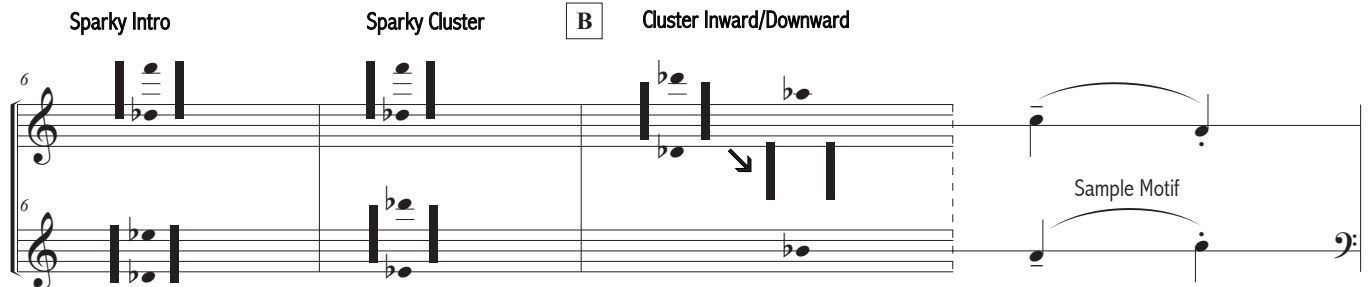
RH, in addition to its chords, can interject cluster chords in response to the LH to create a syncopated feel.

## Sparky Intro

## Sparky Cluster

**B**

Cluster Inward/Downward

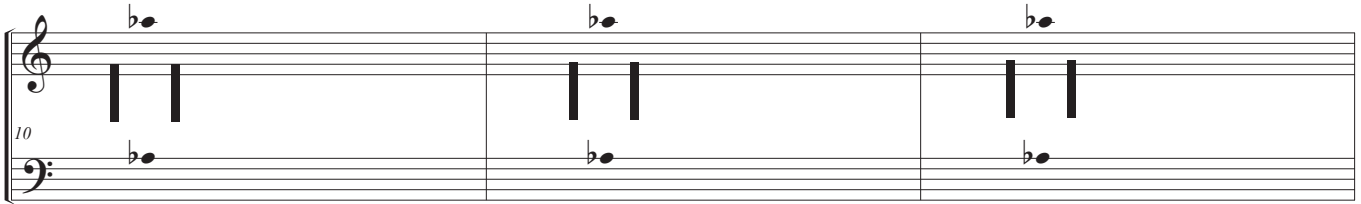


BH play cluster chords using the 2 note motif.

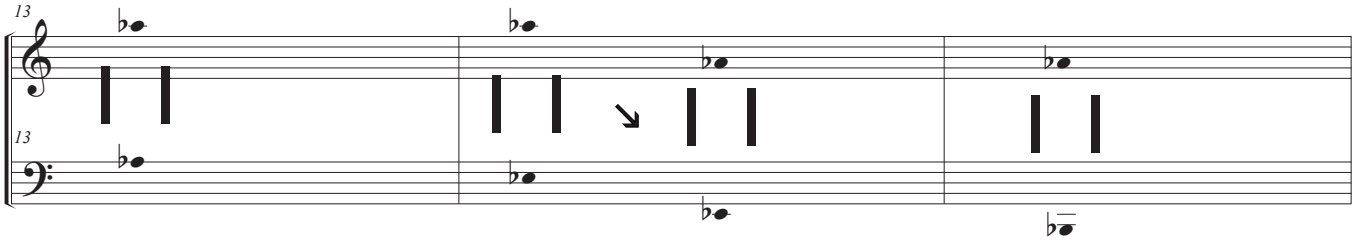
Use only black keys.

Blueprint 7  
Late Summer - Morning

**C** Sparky Cluster Intro - A Flat      Sparky Cluster      Sparky Cluster Intro - A Flat



Sparky Cluster      **D** Cluster Inward/Downward Longer      **E** Languorous Repose




No time signature.

BH: Black Keys only

BH: Arpeggiatic Intertwining

**F** Languorous Rising



Languorous Repose in a rising pattern.

Ends tentatively.

Blueprint 7  
Late Summer - Morning

**G** Sparky Intro Grace Note

Sparky Cluster Grace Note

Sparky Intro Grace Note

BH can use thicker chords;  
use grace notes

Sparky Cluster Grace Note

**H** Cluster Inward/Outward

**I** Sparky Cluster Grace Note - A flat

The ranges of BH move outward.

Sparky Cluster Grace Note

Sparky Cluster Intro - A Flat

Sparky Cluster Grace Note

Blueprint 7  
Late Summer - Morning

**J** Cluster Inward/Downward

27

**K** Languorous Repose Thicker

Bigger, more luxurious.

**L** Languorous Rising

28

Anchor Chord Range

**M**

**N** 2 Cluster Chords

30

# Blueprint 8

## Fall Equinox - Noon

Mode: Fall Equinox - Noon



**A** Orb [15-20 sec] [Phrase 1] [Phrase 2] [Phrase 3] [Phrase 4]

Section A is a musical piece titled 'Orb' with a duration of 15-20 seconds. It consists of five phrases. The first phrase is in 4/4 time and features a melody in the right hand and a bass line in the left hand. The second phrase is in 7/4 time. The third phrase is in 9/4 time. The fourth phrase is in 11/4 time. The fifth phrase is in 11/4 time and ends with a bass clef. The notation includes a double bar line with a right-pointing arrow, indicating a transition or continuation.

BH: no B natural.

RH can ascend, LH descend.

LH: can use 2 note chords.

**B**

Section B is a musical piece titled 'Sample motif'. It consists of a single phrase in 7/4 time. The notation includes a double bar line with a right-pointing arrow, indicating a transition or continuation. The motif is a sequence of notes: C4, D4, E4, F#4, G4, A4, B4, C5.



Blueprint 8  
Fall Equinox - Noon

**C** Dancing Web [15-20 sec] [Phrase 1] [Phrase 2] [Phrase 3]

BH: No A# and limited C

**D** Dancing Web

BH: No E fl or A#.  
A tendency for C tonic.  
LH: can use chords

**E** Fragmented Orb [15-20 sec] [Phrase 1] [Phrase 2] [Phrase 3]

[LH: Starting Note]

**F** Scalar Culmination

Blueprint 8  
Fall Equinox - Noon

**G** **Faster Orb** [10 sec]      [Motif]      [Phrase 1]      [Phrase 2]      [Phrase 3]

**H** **Thicker Dancing Web** [5-8 sec]      [Motif]

8vb

BH: C is tonic.

No B Nat.

Use Octaves.

**I** **Orb Maestoso** [15-20 sec]      [Phrase 1]      [Phrase 2]      [Phrase 3]

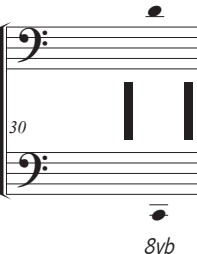

8vb

BH: use Octaves.

The hands can overlap.

LH: with each phrase, LH hits a lower set of octaves.

Blueprint 8  
Fall Equinox - Noon

J	Scalar Culmination	Call	Response	Final Chord
				
	Use Octaves			

# Blueprint 9

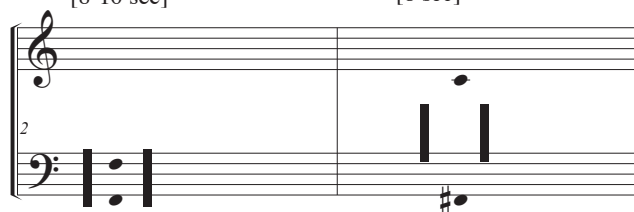
## Late Spring - Noon

General: Avoid too much dissonance.

**Mode: Late Spring - Noon**

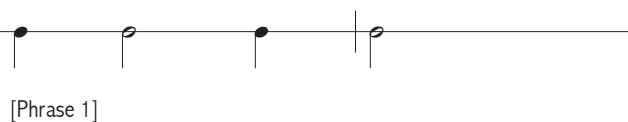


**A** Forward Melody  
[8-10 sec]



A single melodic line.

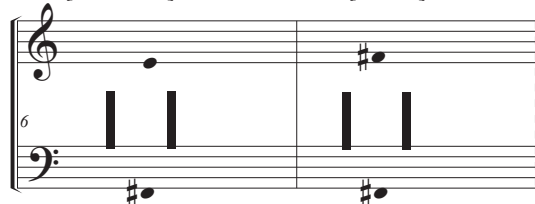
**B** Monk's Steps: Simple  
[8 sec]



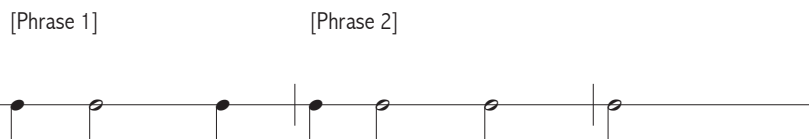
BH: 3-5 note chords. Keep melodic motion.

Motif patterns can be modulated to elongate phrase.

**C** Forward Melody: 2 Voices  
[10-12 sec]



**D** Monk's Steps: Longer  
[12 sec]



Blueprint 9  
Late Spring - Noon

**E** **Monk's Steps: Expand / Contract** [15 sec] [Phrase 1] [Phrase 2] [Phrase 3] [Phrase 4]

Expand... contract.

**F** **Monk's Circle** [15-20 sec] RH: Sample motifs

LH: Sample motifs

Expand... [Phrase 1] [Phrase 2] [Phrase 3]

LH: Bass note is a black key. LH: Bass note is a white key. LH: Bass note is a black key.

[can contract] [Phrase 4] [Phrase 5]

LH: Bass infers a C-E-G-B chord LH: Bass note is a black key.

**G** **Forward Melody: 4 Voices**

BH: An illusion that travels between 3-5 voices

# Blueprint 10

## Mid Fall - Dusk

BH: Avoid C / B nat at the same time.

In Reh's A - G avoid an A fl major triad.

**Mode: Mid Summer - Dusk**



[15 sec]  
**A** Re-turning

[Sample Motifs]

RH: Single notes  
LH: Octaves

[15 sec]  
**B** Re-turning

Perform a second version.

Blueprint 10  
Mid Fall - Dusk

**C** [10 sec] Re-turning: spindly

**D** [15 sec] Re-turning: deeper

LH: Single notes

BH: Play with more intensity.

BH: While adhering to sample motifs,  
can include more notes.

**E** [15 sec] Re-turning: Spindly Thicker

**F** [15 sec] Re-turning: Midrange Deeper

**G** [10 sec] Returning: Stasis.

LH: 2 note chords.

LH: 2 note chords.

RH: 2 note chords.

BH: 2-3 note chords.

A repetitive version coming to stasis.

[OPTIONAL]

**H** [15 sec] Re-turning: Spindly Thicker Still

**I** [15 sec] Re-turning: deeper still

**J** [15 sec] Coming to rest.

LH: 3 note chords gravitating to triadic harmonies.

RH: 2 note chords.

BH: Begin with an A fl triad.

BH: 3 note chords.

BH: 2-3 note chords.

The last chord should include an A fl.

# Blueprint 11

## Late Winter - Afternoon

Mode: Late Winter - Afternoon

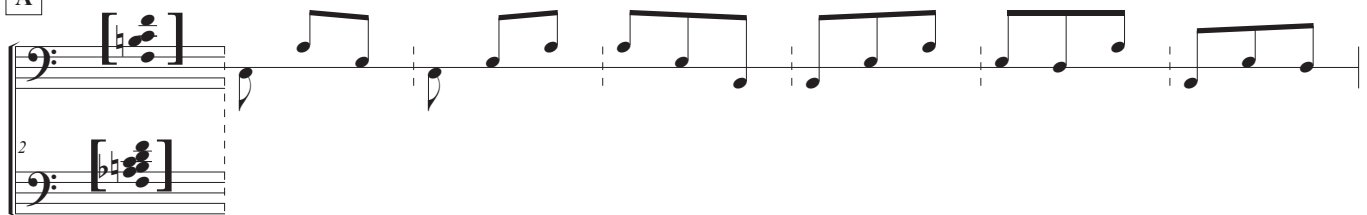


[12 sec]

A

Dancing Melody

[Sample motifs]



BH: No G fl.

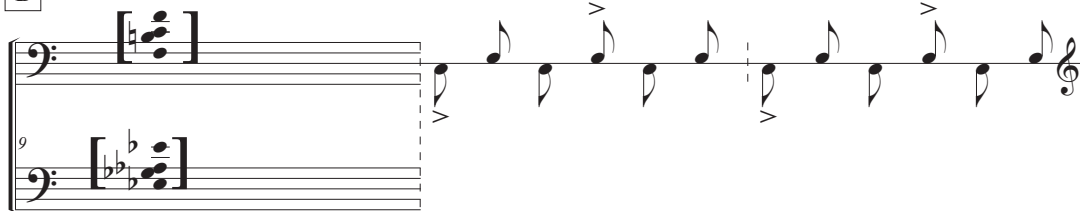
Is generally in 6/8, but can also include 3/8 and 9/8.

LH: creates a melody around the RH patterns.

B

Chord Crush

Sample Motifs



RH: 2-3 note chords on white keys.

LH: 2-3 note chords on black keys.



Blueprint 11  
Late Winter - Afternoon

[12 sec]

**C** Dancing Melody [RH] [LH] **D** Chord Crush: Longer

12 [Downbeat chord]

**E** Dancing Melody: Thicker

[RH] [LH: 1]

14 [LH: 2] [Sample motif]

BH: No G flats.

RH: Add in 2 note chords.

LH: 3 note chords gravitating toward triadic harmonies.  
Mostly in Playground 1, occasionally in 2.

**F** Chord Crush: Interlude

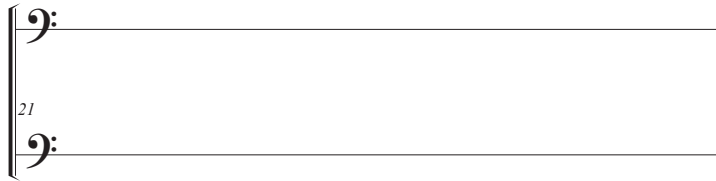
16 [BH: Emphasis] [Sample motif: Part 1] [Sample motif: Part 2]

BH: Use repeated notes between hands.

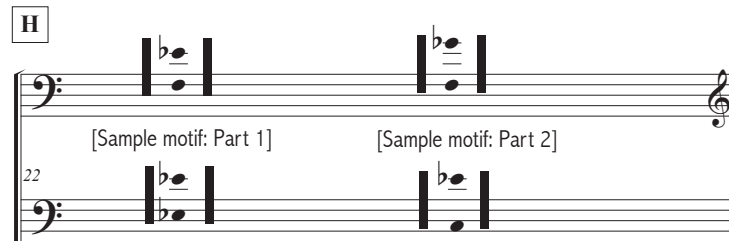
Create a sense of motion in Sample Part 2.

An emphasis on triadic harmony.

**G** Chord Crush: Interlude: Repeat



Chord Crush: Interlude



BH: No G Flats.

Dancing Melody: Thicker Jumping

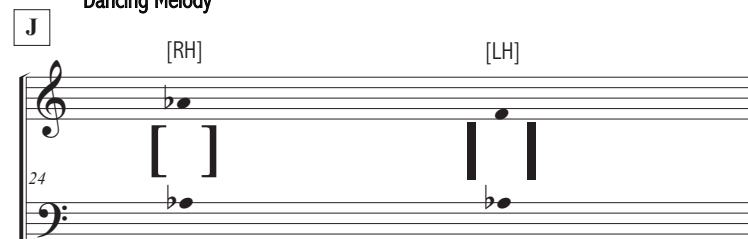


BH: No G flats.

RH: free: motifs can jump around.  
Can use 2 note chords.

LH: Remains.  
Can use 2-3 note chords.

Dancing Melody



RH: Plays only A fl.

LH: Single note melody.

Blueprint 11  
Late Winter - Afternoon

**K** Dancing Melody: Thicker With Octaves

[RH] [LH]

**L** Dancing Melody: Thicker With Octaves

25

RH: plays Dancing Melody: Thicker motifs

LH: plays Dancing Melody motifs with octaves.

**M** Dancing Melody: Thicker With Octaves

[RH] [LH]

**N** Ending

[Sample motif]

27

LH: G fl allowed.

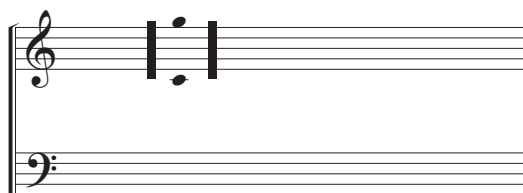
# Blueprint 12

## Spring Equinox - Night

Mode: Spring Equinox - Night



**A** 3 Chords



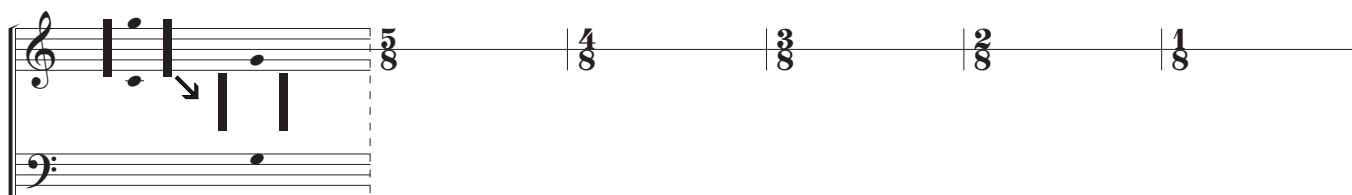
BH: 3 chords contract from consonant to dissonant, from white keys to more black keys.

Chord 1: 6-4 notes (total)

Chord 2: 6-3 notes (total)

Chord 3: 3-2 notes (total). The tonic of this chord should be a black key.

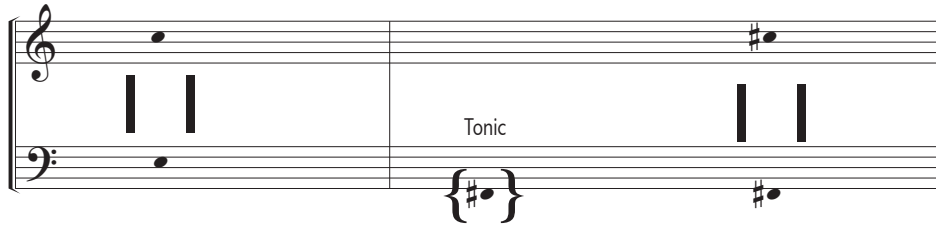
**B** Contracting Arpeggios



Blueprint 12  
Spring Equinox - Night

**C** 3 Chords

**D** To Be Or Not To Be



BH: No G natural.

Chords mixed with single notes.

The Chords should follow the rhythm of:

*To be or not to be, that is the question*

**E** Whether 'Tis Nobler



[Phrase 1]

[Phrase 2]

BH: Use similar arpeggiated pattern as in B, but free of the need to contract. Both white and black keys OK.

No G natural.

BH: C is the sense of tonic.

Use A fl sparingly.

Continue to play with C and D fl.

The arpeggiation should follow the rhythm of:

*Whether 'tis nobler in the mind to suffer  
The slings and arrows of outrageous fortune*

BH: D fl is the sense of tonic.

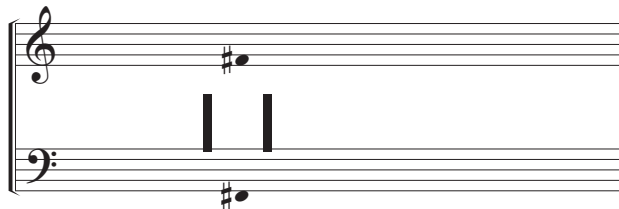
LH can use 2 note chords.

The arpeggiation should follow the rhythm of:

*Or to take up arms against a sea of troubles,  
And by opposing, end them*

Blueprint 12  
Spring Equinox - Night

**F** 3 Chords: Deeper

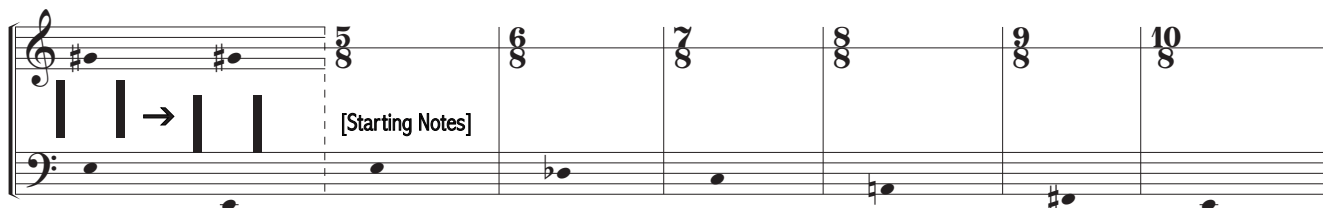


BH: F# is the tonic. No G natural.

All chords: 6-3 notes.

Should progress from consonance to dissonance.

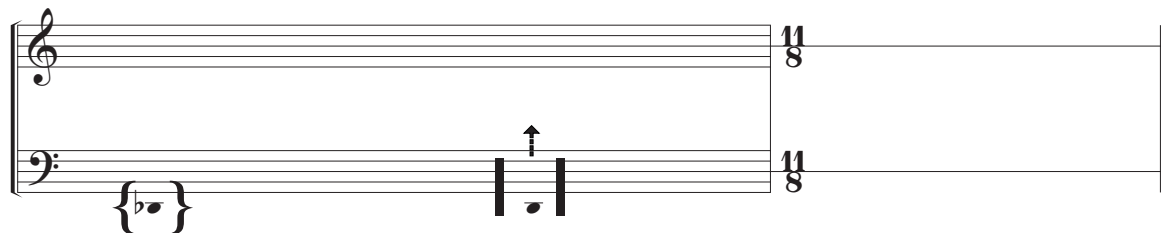
**G** Deepening Arpeggiation



BH: No G natural.

Use A fl sparingly.

**H** Final 11/8



[starting note]

Don't use G natural / A flat

11 single 8th notes climb up the keyboard leading to a 12th 2 note chord.

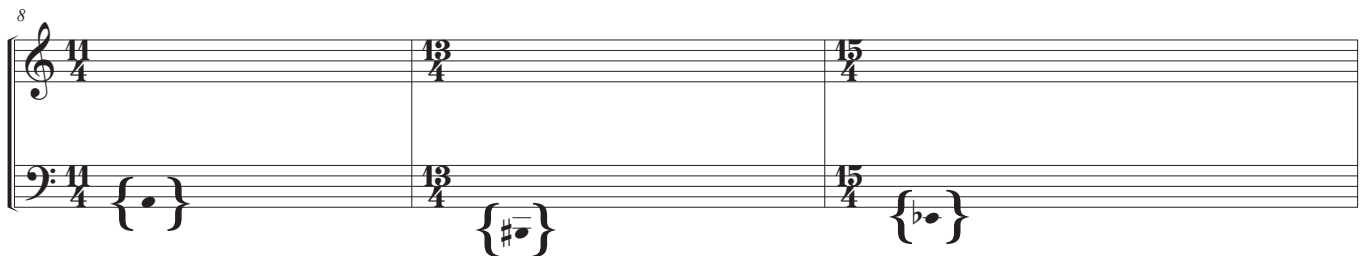
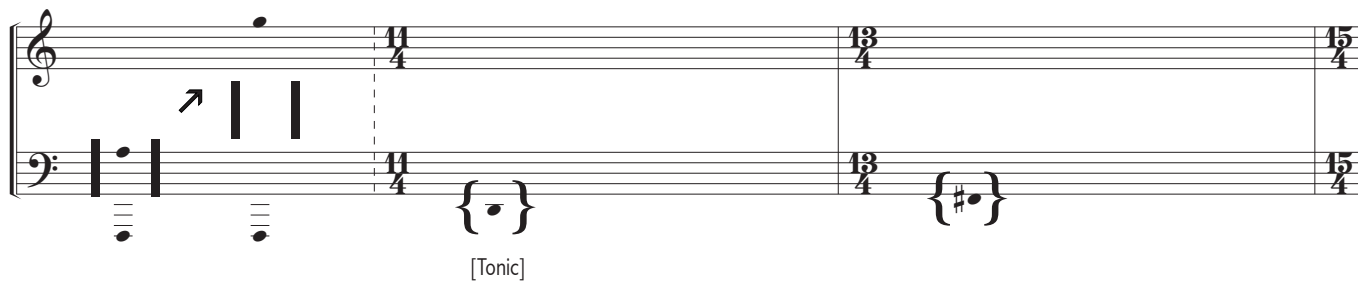
# Blueprint 13

## Mid Fall - Noon

Mode: Mid Fall - Noon



A Churning Octaves



Blueprint 13  
Mid Fall - Noon

**B** Surging Chords

14/4 12/4 10/4

**C** Inverse Rain

14/4 12/4 10/4

14/4 12/4 10/4

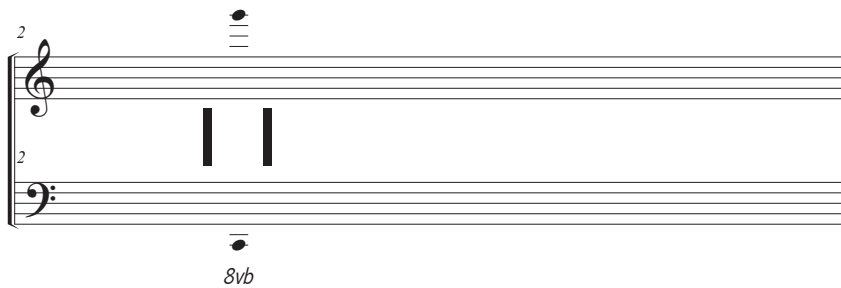
14/4 12/4 10/4



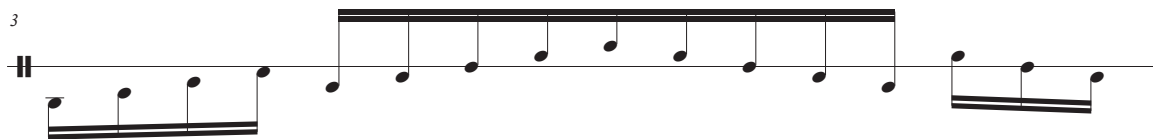
# Blueprint 14

## Late Winter - Dawn

Mode: Late Winter - Dawn



Churning: Sample Motif



Blueprint 14  
Late Winter - Dawn

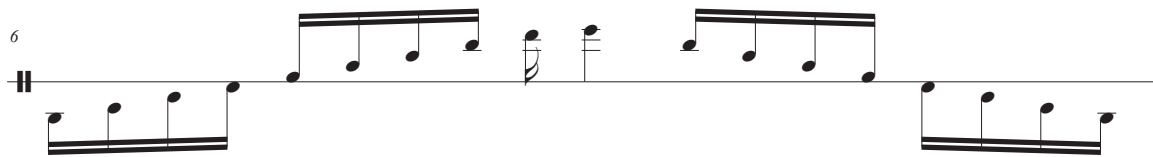
Rising Surge: Sample Motif



Descending Surge: Sample Motif

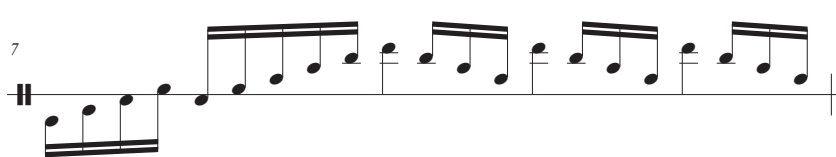
Avoid non-overlap "piano roll".

Dancing Wave: Sample Motif



LH reaches over to play top notes.

Cresting Wave: Sample Motif



The LH-over melody can also descend down into the RH patterns.

# Blueprint 15

## Mid-Winter Dawn



**A**      [Phrase 1]      [Phrase 2]      [Phrase 3]

More than 4 notes      More than number of notes in Phrase 2

**B**      Rapid Elevation With Tug and Pull

[Starting Note]      8va      Last note is #C7

Blueprint 15  
Mid-Winter Dawn

**C** Churning | Rising Surge | Dancing Wave | Cresting Wave  
[Subscale]

Descending Surge

See Raga #14

**D** Rapid Elevation With Tug and Pull  
[Main Scale]

**E** Plateau

[RH range]

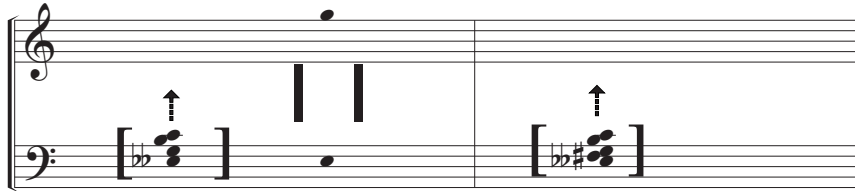
[LH notes]

2-3 times and then it trails off

Same concept as Rapid Elevation  
but non-directional

Blueprint 15  
Mid-Winter Dawn

**F** Ponderous Chords

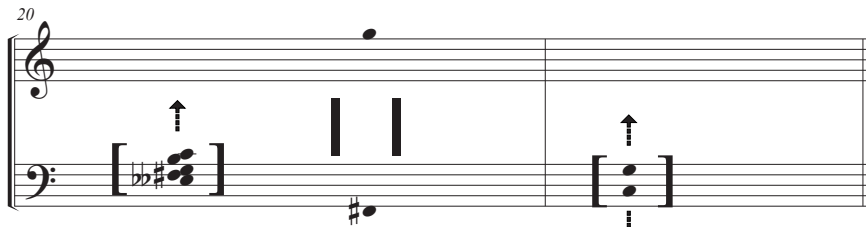


Follow the rhythm and intonation of the words:

[Add F# to chords]

*In the bleak midwinter, frosty wind made*

*Moan*



*Earth stood hard as iron, water like*

*stone.*

# Blueprint 16

## Mid-Summer Dawn

Mode: Mid Summer Dawn



[Reh A - D 35-40 secs]

A

LH: Call to March

LH: Splintering



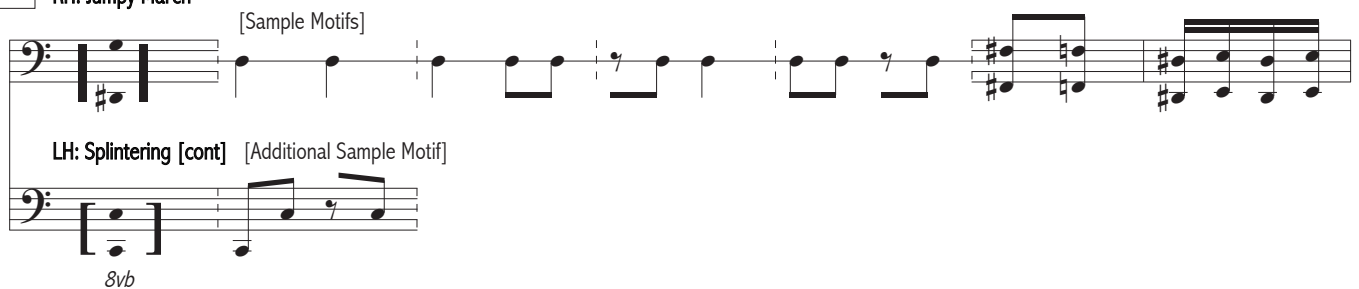
B

RH: Jumpy March

[Sample Motifs]

Int. Motif #1

Int. Motif #2



RH: Can use 2 Note Chords (3rd, 4th, 5ths)

RH: Interjected Motif #1

Can use either upper notes, lower notes, or both.

RH: Interjected Motif #2:

Can play 1 or more sets of 4 X 16ths

Can replace 16th note with a rest

Can play upper or lower notes

Blueprint 16  
Mid-Summer Dawn

**C** RH: Jumpy March [cont]      Int. Motif #1A      Int. Motif #2A

LH: Splintering [cont]

LH: Play mainly E's with occasional F's

RH: Interjected Motif #1A  
Can use single notes or octaves.

Interjected Motif #2A  
Can play 1 or more sets of 4 X 16ths  
Can replace 16th note with a rest.  
Can play single notes or octaves.

**D** RH: Jumpy March [cont]

LH: Jumping Octaves with Int. Motifs

Int. Motif #1B      Int. Motif #2B

8vb      8vb

LH: Splintering: Mainly A fl's. A sneaky feeling.

LH: Interjected Motifs: Can add 2-3 note chords, using rhythms of Jumpy March, especially fitting into the silences offered by the RH.

RH: Interjected Motif #1B  
Can use single notes or octaves.

Interjected Motif #2B  
Can play 1 or more sets of 4 X 16ths  
Can replace 16th note with a rest  
Can use single notes or octaves.

**BH: Half-cadence**      [Sample Motif]

19

8vb

BH: 2-3 Note Chords

Blueprint 16  
Mid-Summer Dawn

**E**    **BH: Call to March**    [Sample Motif]    **BH: Splintering**    [Sample Motif]

*8vb*

BH: An open sound.  
Can play 1-3 Note Chords

BH: An open sound.  
Can play 1-3 Note Chords

**F**    **RH: Jumpy March**    **RH: Int. Motif #4**    [Sample Motifs]

LH: Jumping Octaves

RH: Can incorporate 3rds, 4ths and 5ths  
as well as occasional scalar  
Can use rests in place of 16ths

LH: can occasionally insert an octave in a 16th rest

RH: 2-3 note chords  
Can use Int. Motif 1A, 2A and 4

LH: Splintering played with octaves

**G**    **RH: Jumpy March [cont]**

LH: Jumping Octaves with Int. Motifs

LH: Interjected Chords #2

*8vb*

RH: 2-3 note chords  
Can use Int. Motif 1A, 2A and 4

LH: Interjected Chords #2  
These sneak into the Splintering.  
Use 2-3 note chords.



Blueprint 16  
Mid-Summer Dawn

**H** RH: Jumpy March [cont]

RH: Jumpy March [cont]

LH: Jumping Octaves with Int. Motif #1

LH: Interjected Chords #2

RH: Int. Motif #4 more prominent

LH: Interject Chords #2 more prominent

**I** RH: Int. Motif #4

RH: Int. Motif #4

RH

LH: Interjected Chords #2

LH: Jumping Octaves with Int. Motifs

**J** BH: Int. Motif #4

BH: Int. Motif #4

8va

BH: Final Note

BH: Final note in octaves

# Blueprint 17

## Summer Solstice - Dawn



Mode: Summer Solstice - Dawn  
BH: Glistening Cascade

[Phrase 1]      [Phrase 2]      [Phrase 3]

Starting Notes      End Note

Motion can fall  
with rise and fall.

**B**      RH: Glistening Cascade [cont]  
LH: Octave counterpoint  
RH

**C**      RH: Reverse Glistening Cascade  
LH: Chord counterpoint  
RH      LH

LH: In octaves  
Can be played on or in between RH notes,  
and with the feel that LH is duple while RH is triplet

LH: Starting Note      LH: Replace octaves with 2-3 notes

Blueprint 17  
Summer Solstice - Dawn

**Mode: Summer Solstice Night**

BH: Glistening Cascade

[Phrase 1]

[Phrase 2]

**D**

Starting Notes

End Note

End Note

Repeat Glistening

**E**

Repeat Glistening

Journey to last fragment

Last phrase can be a fragment

# Blueprint 18

## Late Fall - Noon

Text is from “For a Coming Extinction” by W.S. Merwin.



**A**      Mode: Late Fall - Noon      Upward Strum

Starting Note

Strum can resonate under following melody.

**B**      One Voice Melody      **C**

RH: A single line.

Follow the contour of:

*Tell him  
That we who follow you invented forgiveness*

Phrases can be repeated.

Blueprint 18  
Late Fall - Noon

**D** Modes: Late Fall - Noon with a hint of Late Fall - Dawn  
Upward Strum

**E** Two Voice Melody

**F**

Starting Note

BH: LH and RH play different notes creating a 2 voice melody with alignment sometimes present.

Follow the contour of:

*I write as though you could understand*

Phrases can be repeated.

Damper pedal can hold last chord.

**G** Three Voice Melody

End Notes

BH: 3 Voices shared by LH and RH play different notes aligned as before.

("you")

Follow the contour of:

*Empty of you.*

